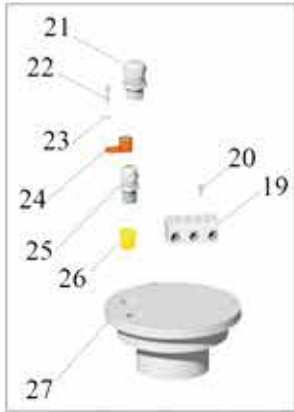
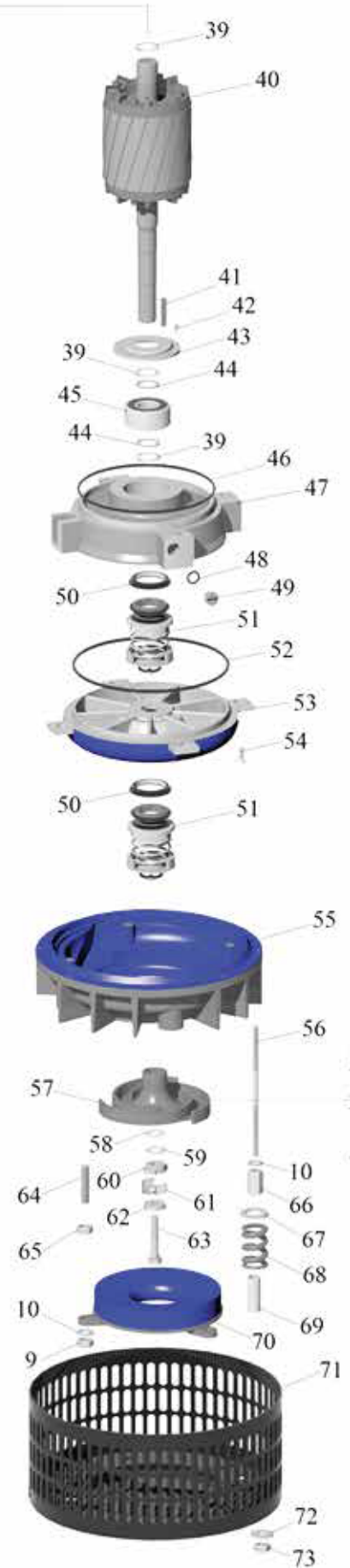
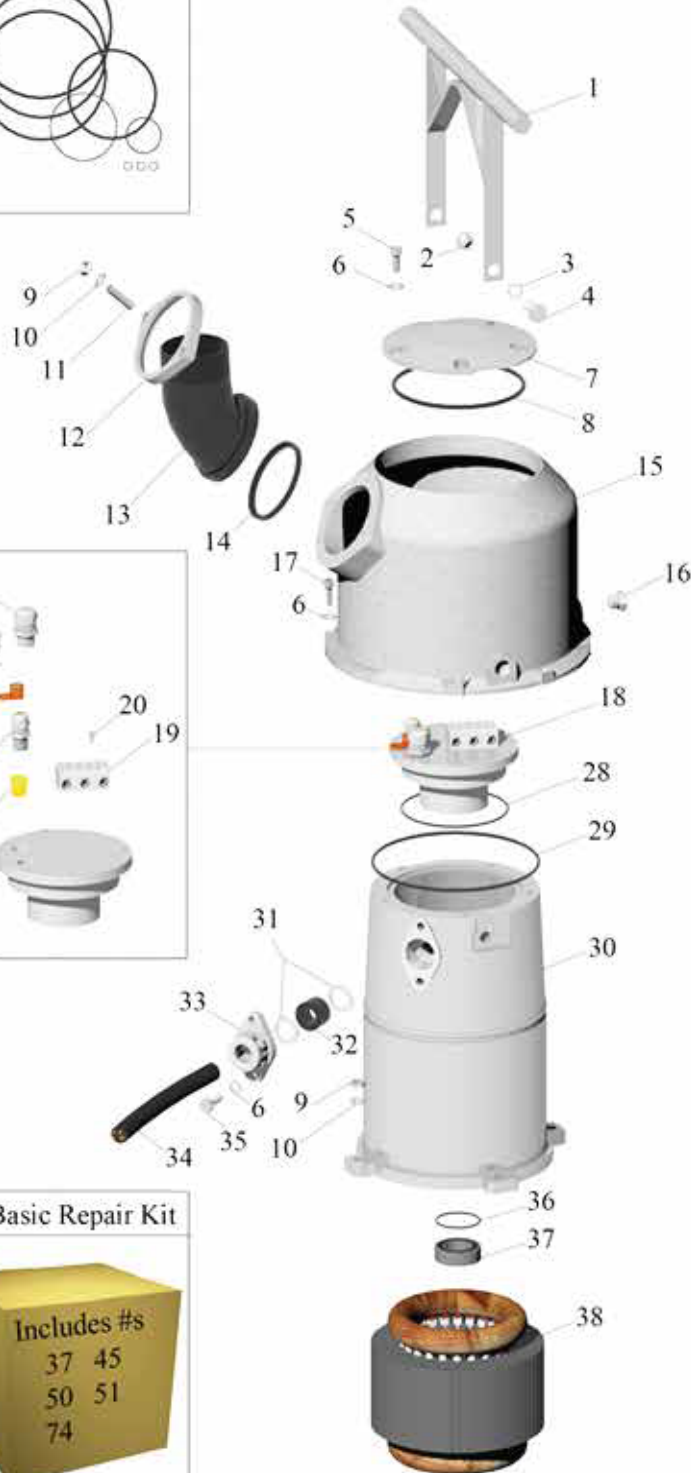


74 O-ring Kit



75 Basic Repair Kit



Inverted for clarity

SD160HH 8.2HP

Item #	Item Description	Details	QTY	OEM Part #
8.2-1	Handle	SS	1	
85.65	Bushing	Flanged SS	2	337 14 01
8.2-3	Washer	12mm SS	2	82 35 20
8.2-4	Bolt	12mm x 20mm SS	2	81 41 52
8.2-5	Bolt	8mm x 20mm SS	5	81 41 04
8.2-6	Washer	8mm SS	15	82 35 16
8.2-7	Junction Cover	Aluminum	1	
8.2-8	O-Ring	139.3mm x 5.7mm B-70	1	82 74 20
8.2-9	Nut	10mm SS	9	82 25 58
8.2-10	Washer	10mm SS	13	82 32 18
8.2-11	Stud	10mm x 40mm SS	2	80 95 05
8.2-12	Flange Ring	Aluminum	1	315 86 00
8.2-13-A	Discharge 3" NPT	Swivel/Aluminum	1	337 55 01
8.2-13-B	Discharge 3" Vic	Swivel/Aluminum		
8.2-14	Seal Ring	Rubber	1	315 87 00
8.2-15	Outer Housing Discharge	Aluminum	1	433 61 00
8.2-16	Inspection Plug	Durlon	3	316 03 00
8.2-17	Screw/Socket Head	8mm x 35mm SS	8	
8.2-18	Terminal Board/Bearing Housing	Complete With Items: 18,19,20,21,22,23,24,25,26 & 27		
8.2-19	Terminal Block	Ceramic	1	
8.2-20	Screw	3mm x 20mm SS	2	
8.2-21	Wire Pull Through	Stator	1	
8.2-22	Bolt	6mm x 20mm SS	4	
8.2-23	Washer	6mm SS	4	
8.2-24	Ground Lug	Brass	1	
8.2-25	Wire Pull Through	Therminals (Optional)		
8.2-26	Plug	Brass	1	
8.2-27	Terminal Board/Bearing Housing	Aluminum	1	
8.2-28	O-Ring	120mm x 3mm B-70	1	
8.2-29	O-Ring	194.3mm x 5.7mm B-70	1	82 74 92
8.2-30	Stator Housing	Aluminum	1	
8.2-31	Washer	20mm To 22mm Cable	2	82 40 60
8.2-32	Grommet	20mm To 22mm Cable	1	84 35 36
8.2-33	Cable Entry Assembly	Includes Clamps/Screws	1	394 77 01
8.2-34	Power Cable 50'	10/5 SOOW 1		
8.2-35	Bolt	8mm x 25mm SS	2	81 41 06
8.2-36	O-Ring	52.5mm x 3mm B-70	1	82 77 95
8.2-37	Upper Bearing	6205/2RD/C3/SKF	1	83 32 45
8.2-38	Stator	3/60/460 Volt	1	460 95 38
8.21-39	Retaining Ring	23.2mm SS	3	82 58 96
8.2-40	Rotor/Complete	SS Shaft	1	337 24 00
8.2-41	Key	6mm x 6mm x 35mm SS	1	80 67 01
8.2-42	Bolt	6mm x 12mm SS	3	
8.2-43-A	Bearing Cover	Aluminum	1	N/A
8.2-43-B	Bearing Cover/OEM Style	Aluminum		373 17 00
8.2-44	Bearing Spacer	25mm x 35mm SS	2	82 44 09
8.2-45	Lower Bearing	5305/2RS	1	83 36 09
8.2-46	O-Ring	194.3mm x 5.7mm B-70	1	82 75 24
8.2-47	Lower Bearing Housing	Aluminum	1	538 09 00
8.2-48	O-Ring	10.3mm x 2.4mm B-70	3	82 73 82
8.2-49	Inspection Screw	SS	3	303 44 02
8.2-50	Wear Protector	Rubber/SS	2	549 00 00
8.2-51	Upper/Lower Seal	Tc/Tc	2	399 26 05
8.2-52	O-Ring	199.3mm x 5.7mm B-70	1	82 74 93
8.2-53	Oil Housing	Polyurethane	1	538 08 01
8.2-54	Screw/Flat Head	6mm x 16mm SS	4	82 11 84
8.2-55	Diffuser Ring	Polyurethane	1	337 19 01
8.2-56	Stud	10mm x 212mm SS	4	337 41 02
8.2-57	Impeller Hh SS 17-4	Code 234 60Hz SS	1	341 96 00
8.2-58	Adjusting Washer Impeller	0.03mm SS	2	334 71 00
8.2-59	Adjusting Washer Impeller	1.5mm SS	2	334 71 01
8.2-60	Lock Washer Impeller	SS	1	338 73 00
8.2-61	Lock Washer Impeller	SS	1	334 69 00
8.2-62	Impeller Nut/Puller	SS	1	338 13 03
8.2-63	Bolt Impeller	8mm x 45mm SS	1	81 42 90
8.2-64	Stud	10mm x 40mm SS	3	84 46 15
8.2-65	Nut/Jam	10mm SS	3	
8.2-66	Nut/Coupler	10mm x 26mm SS	4	337 40 00
8.2-67	Washer	20mm x 35mm SS	4	82 44 06
8.2-68	Spring	SS	4	288 61 00
8.2-69	Distance Tube	SS	4	373 21 00
8.2-70	Lower Wear Plate Hh	Polyurethane	1	337 23 01
8.2-71	Strainer (Intake)	Steel Powder Coated	1	373 20 00
8.2-72	Washer	10mm x 30mm SS	4	82 35 18
8.2-73	Nut	10mm x Fiber Lock SS	4	82 23 58
8.2-74	O-Ring Kit	Includes Items: 8,14,28,29,36,46,48 & 52	1	80 32 53
8.2-75	Basic Repair Kit	Includes Items: 37,45,50,51 & 74	1	601 90 03

